

OPTICAL FIBER

Fiber Optic Adapter

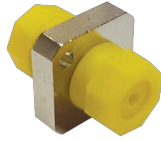
Optical Adapter/Coupler

Optical Fiber Adapter

A variety of Optical Fiber Adapters/Couplers



SC Adapter, Simplex



FC Adapter, Singlemode



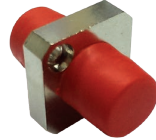
LC Adapter, Singlemode



ST Adapter, Singlemode



SC Adapter, Duplex



FC Adapter, Multimode



LC Adapter, Multimode



ST Adapter, Multimode

Overview

Optic Digital offers an extensive range of optical adapters for use in FTTx, telecommunications, data communications and CATV applications. All adapters are fully qualified to Telcodia GR326 and IEC 61300 and all materials used are RoHS compliant. Adapters can be supplied in a variety of colors and types such as SC, FC, ST, LC, E2000 etc.

Features

- Qualified to Telcodia GR326 and IEC 61300 standards and RoHS compliant materials.
- Available for many different connector types such as SC, FC, ST, LC, E2000, MTRJ etc.
- All adapters are supplied with ceramic inserts.
- Supplied in a range of different colors to match connector type.
- Both simplex and duplex adapters are available.

Applications

- FTTx
- CATV
- Data Communication
- Telecommunications
- Test and measurement

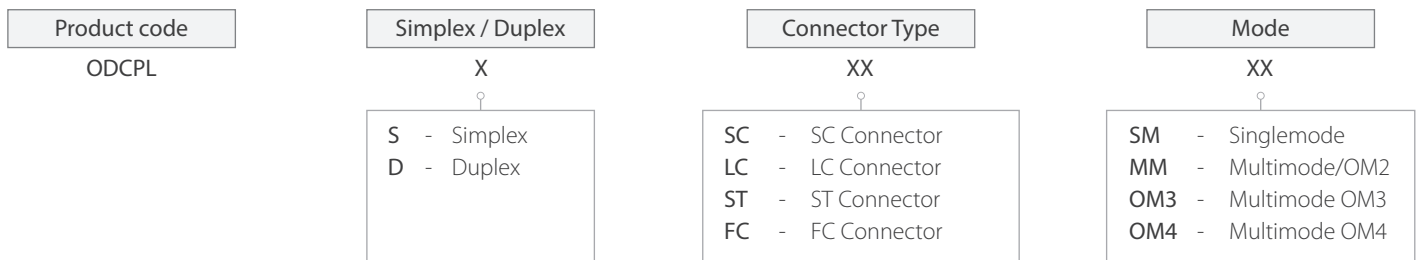
Technical Specifications

| | Singlemode (1310/1550nm) | Multimode (850nm) |
|-----------------------------|---------------------------------|-------------------|
| Maximum Insertion Loss (dB) | ≤ 0.3 Typical 0.2 (UPC and APC) | ≤ 0.4 (UPC) |
| Return Loss (dB) | ≥ 55 (UPC), ≥ 65 (APC) | Not measured |
| Intermateability | IEC 874-14 | IEC 874-4 |
| Operating temperature | -40°C to + 85°C | -40°C to + 85°C |

Available Options

| Product code | Type | Descriptions |
|--------------|------------------------------------|---|
| ODCPLSSCSM | SC adapter, Singlemode, Simplex | Optic Digital Singlemode, Simplex SC fiber adapter |
| ODCPLDSCSM | SC adapter, Singlemode, Duplex | Optic Digital Singlemode, Duplex SC fiber adapter |
| ODCPLSSCMM | SC adapter, Multimode, Simplex | Optic Digital Multimode, Simplex SC fiber adapter |
| ODCPLDSCMM | SC adapter, Multimode, Duplex | Optic Digital Multimode, Duplex SC fiber adapter |
| ODCPLSSCM3 | SC adapter, Multimode OM3, Simplex | Optic Digital Multimode OM3, Simplex SC fiber adapter |
| ODCPLDSCM3 | SC adapter, Multimode OM3, Duplex | Optic Digital Multimode OM3, Duplex SC fiber adapter |
| ODCPLSLCSM | LC adapter, Singlemode, Simplex | Optic Digital Singlemode, Simplex LC fiber adapter |
| ODCPLDLCSM | LC adapter, Singlemode, Duplex | Optic Digital Singlemode, Duplex LC fiber adapter |
| ODCPLSLCMM | LC adapter, Multimode, Simplex | Optic Digital Multimode, Simplex LC fiber adapter |
| ODCPLDLCMM | LC adapter, Multimode, Duplex | Optic Digital Multimode, Duplex LC fiber adapter |
| ODCPLSLCM3 | LC adapter, Multimode OM3, Simplex | Optic Digital Multimode OM3, Simplex LC fiber adapter |
| ODCPLDLCM3 | LC adapter, Multimode OM3, Duplex | Optic Digital Multimode OM3, Duplex LC fiber adapter |
| ODCPLSSTSM | ST adapter, Singlemode, Simplex | Optic Digital Singlemode, Simplex ST fiber adapter |

Ordering Information



Example

ODCPLSSCSM = Optic Digital Singlemode, Simplex SC fiber adapter

ODCPLDLCM3 = Optic Digital Multimode OM3, Duplex LC fiber adapter